



OVERVIEW CALIFORNIA STATE UNIVERSITY & UNIVERSITY OF CALIFORNIA SYSTEMS (UC'S AND CSU'S)

Trivia: The first CSU was built in 1857 in San Jose.
GO SPARTANS!

Overview of CSU's and UC

- What are the UC/CSU Systems?
- What are the similarities?
- What are the differences?
- What can I do now to be eligible?
- What are the application deadlines?
- What does it cost?
- What does “impaction” mean?
- What resources are out there?
- What questions do you have?

SIMILARITIES (UC and CSU)

- Public Institutions
- A – G Rigorous Curriculum
 - GPA after 9th Grade
 - Use eligibility Index
- ACT or SAT exams
- Offers Bachelors, Masters, and Professional Degrees
- Have impacted/closed majors at some campuses
- Only have to fill out one application fro all 23 CSU's or 10 UC's. (Fee's apply to each)



DIFFERENCES

- The Application Process
- The Cost of Attendance
- Holistic Review (UC)
- The Eligibility Index
 - GPA
 - ACT and SAT Writing



Knowing the A-G's

To be eligible for UC's and CSU's you NEED these classes

Letter	Area	Years Required	Years Recommended
A	History/Social Sciences	2 years	
B	English	4 years	
C	Mathematics	3 years	4 years
D	Laboratory Sciences	2 years	3 years
E	Language Other Than English	2 years	3 years
F	Visual and Performing Arts	1 year	
G	College-Preparatory Electives	1 year	

Knowing the test requirement SAT OR ACT???

- ACT TEST

www.actstudent.org

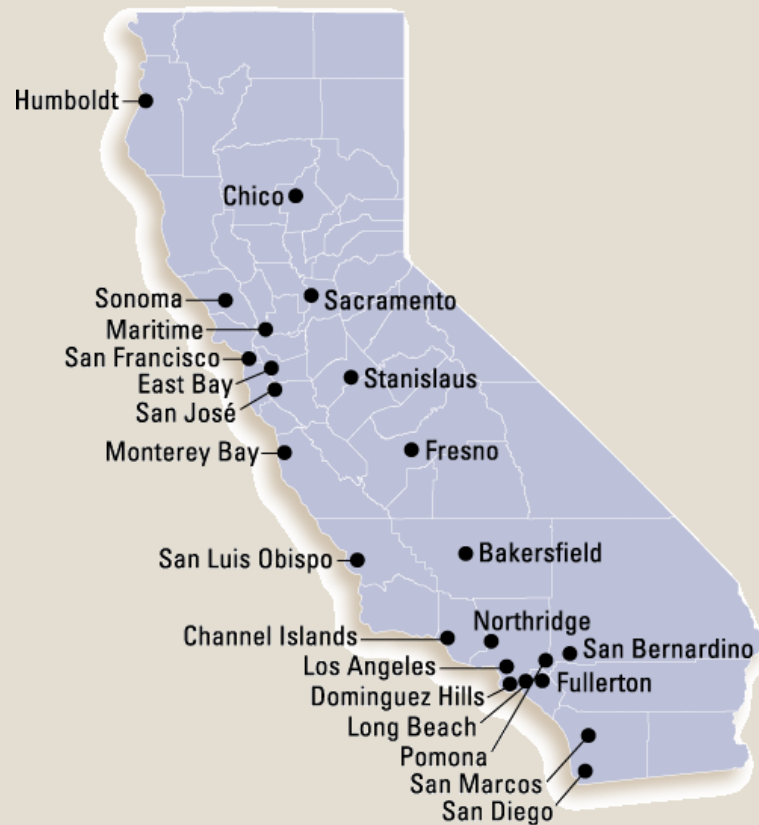
ACT Essay: Optional
(always recommended)

- SAT TEST

www.collegeboard.org

SAT Essay: Optional
(always recommended)

California State University (CSU's) (23 campuses)



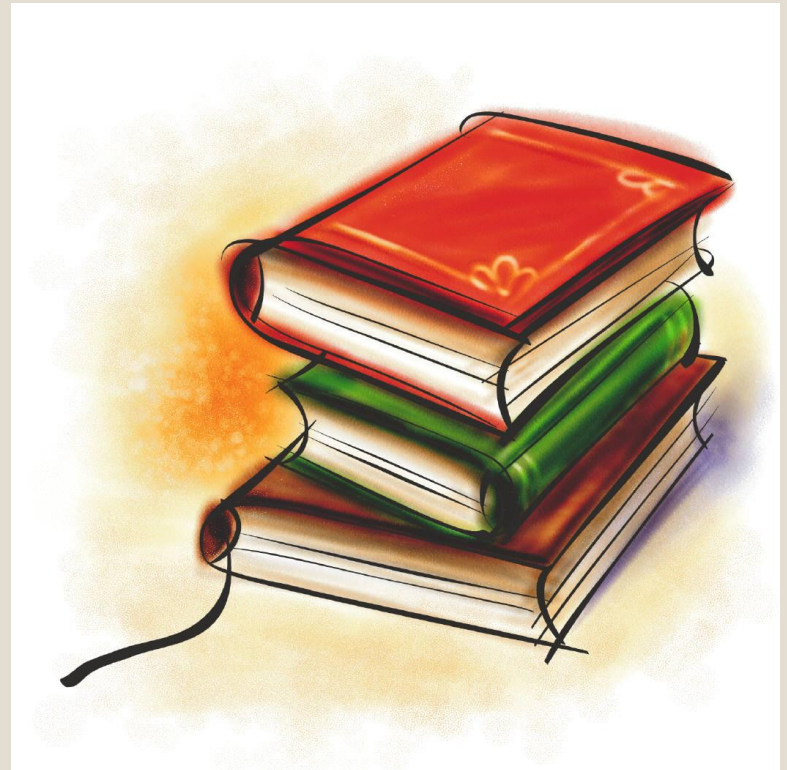
Average Cost of Attendance

- **On Campus:**
 - \$25,000 (ish)
- **Off Campus**
 - \$23,000 (ish)
- **With Parents**
 - \$16,000 (ish)
- **Tuition: \$7,000 (ish)**



CSU Application Process

- calstateapply.edu
- Oct. 1st – Nov. 30th
- Take ACT/SAT by
December of your
Senior year



Eligibility Criteria for CSU's

- Eligibility Index
 - A – G coursework (15 units)
Grades in A – G courses
(C's or better)
 - ACT or SAT test scores
 - High School Graduation
- 3.0 GPA qualifies with any
ACT/SAT test score
- Impacted majors may exist
on some campuses



SAT Eligibility Index Table of California High School Graduates or Residents of California

(A GPA of 3.00 and above qualifies for any score in SAT)

GPA	NEW SAT SCORE	GPA	NEW SAT SCORE	GPA	NEW SAT SCORE
2.99	560	2.66	830	2.33	1090
2.98	570	2.65	830	2.32	1100
2.97	580	2.64	840	2.31	1110
2.96	590	2.63	850	2.30	1110
2.95	590	2.62	860	2.29	1120
2.94	600	2.61	860	2.28	1130
2.93	610	2.60	870	2.27	1140
2.92	620	2.59	880	2.26	1150
2.91	630	2.58	880	2.25	1150
2.90	630	2.57	900	2.24	1160
2.89	640	2.56	910	2.23	1170
2.88	650	2.55	910	2.22	1180
2.87	660	2.54	920	2.21	1190
2.86	670	2.53	930	2.20	1190
2.85	670	2.52	940	2.19	1200
2.84	680	2.51	950	2.18	1210
2.83	690	2.50	950	2.17	1220
2.82	700	2.49	960	2.16	1230
2.81	710	2.48	970	2.15	1230
2.80	710	2.47	980	2.14	1240
2.79	720	2.46	990	2.13	1250
2.78	730	2.45	990	2.12	1260
2.77	740	2.44	1000	2.11	1270
2.76	750	2.43	1010	2.10	1270
2.75	760	2.42	1020	2.09	1280
2.74	770	2.41	1030	2.08	1290
2.73	780	2.40	1030	2.07	1300
2.72	780	2.39	1040	2.06	1310
2.71	790	2.38	1050	2.05	1310
2.70	790	2.37	1060	2.04	1320
2.69	800	2.36	1070	2.03	1330
2.68	810	2.35	1070	2.02	1340
2.67	820	2.34	1080	2.01	1350
				2.00	1350

GPA below 2.0 does not qualify for admission

* For admissions purposes, the CSU uses only the new SAT scores for mathematics and evidence based on reading and writing.

ACT Eligibility Index Table of California High School Graduates or Residents of California

(A GPA of 3.00 and above qualifies for any score in ACT)

GPA	ACT SCORE	GPA	ACT SCORE	GPA	ACT SCORE
2.99	10	2.66	17	2.33	23
2.98	10	2.65	17	2.32	23
2.97	10	2.64	17	2.31	24
2.96	11	2.63	17	2.30	24
2.95	11	2.62	17	2.29	24
2.94	11	2.61	18	2.28	24
2.93	11	2.60	18	2.27	24
2.92	11	2.59	18	2.26	25
2.91	12	2.58	18	2.25	25
2.90	12	2.57	18	2.24	25
2.89	12	2.56	19	2.23	25
2.88	12	2.55	19	2.22	25
2.87	12	2.54	19	2.21	26
2.86	13	2.53	19	2.20	26
2.85	13	2.52	19	2.19	26
2.84	13	2.51	20	2.18	26
2.83	13	2.50	20	2.17	26
2.82	13	2.49	20	2.16	27
2.81	14	2.48	20	2.15	27
2.80	14	2.47	20	2.14	27
2.79	14	2.46	21	2.13	27
2.78	14	2.45	21	2.12	27
2.77	14	2.44	21	2.11	28
2.76	15	2.43	21	2.10	28
2.75	15	2.42	21	2.09	28
2.74	15	2.41	22	2.08	28
2.73	15	2.40	22	2.07	28
2.72	15	2.39	22	2.06	29
2.71	16	2.38	22	2.05	29
2.70	16	2.37	22	2.04	29
2.69	16	2.36	23	2.03	29
2.68	16	2.35	23	2.02	29
2.67	16	2.34	23	2.01	30
				2.00	30



GPA below 2.0 does not qualify for admission

University of California (10 campuses)



Average Cost of Attendance

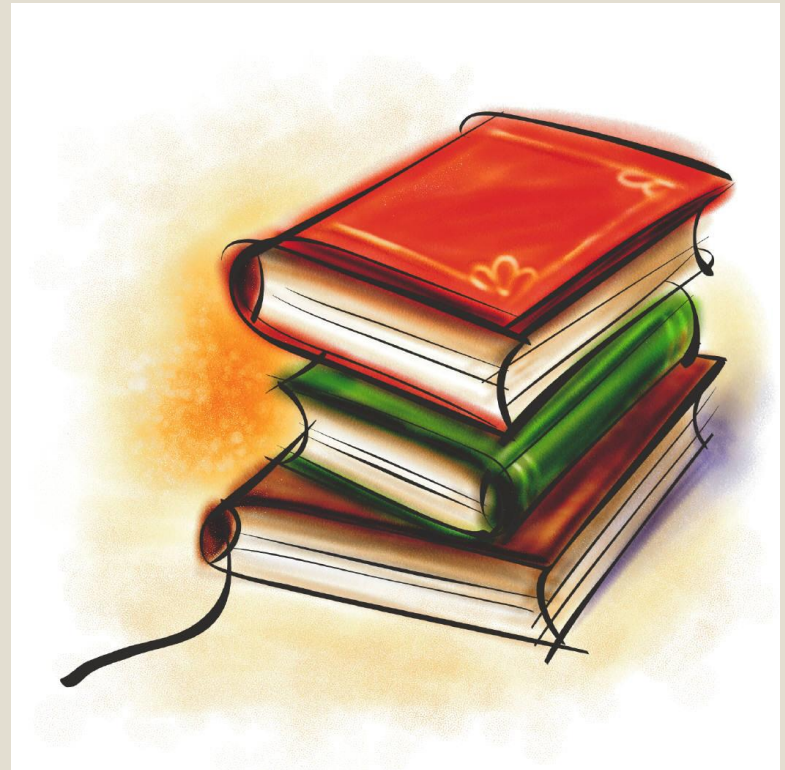
- **On Campus:**
 - \$32,400 (ish)
- **Off Campus:**
 - \$29,200 (ish)
- **TUITION: \$14,000**



UC Application Process

www.universityofcalifornia.edu

- **Aug. 1st (prep period)**
- **Nov. 1 – 30th (filing period)**
- **Take ACT plus writing or the SAT by December of your senior year**
- **Compose Personal Insights**



Personal Insight Questions

- You will have 8 questions to choose from. You must respond to only 4 of the 8 question
- Each response is limited to a maximum of 350 words.
- Which questions you choose to answer is entirely up to you: But you should select questions that are most relevant to your experience and that best reflect your individual circumstances

3 examples (out of 8)

- **Describe an example of your leadership experience in which you have positively influenced others, helped resolve disputes or contributed to group efforts over time.**
- **Describe how you have taken advantage of a significant educational opportunity or worked to overcome an educational barrier you have faced.**
- **What have you done to make your school or your community a better place?**

Eligibility Criteria for UC's

- Eligibility Index
 - A – G coursework (15 units total)
11 of them complete before the 12th grade.
 - ACT plus Writing or
 - SAT test scores
 - High School Graduation
- 3.0 minimum weighted GPA
- Impacted campuses/majors may require SAT Subject tests
- Top 9% in your class = guaranteed admission (UC's overall)
- Holistic Review



HOLISTIC REVIEW 14 Factors

Beyond grades and test scores

- Academic GPA
- Test Scores
- Courses beyond A – G
- Honors/AP/IBO
- Senior year courses
- Outstanding in a subject
- Doing all you can with what is offered
- Outstanding projects
- Marked academic improvement
- Special talents/achievements
- Special Projects tied w/ curriculum
- Accomplishments in light of tougher circumstances
- Location of your school/home
- Rank in top 9 % of your class

Impaction.

- Impaction means that a campus receives more eligible applicants than they can accommodate and therefore must restrict enrollment to that campus (often requiring higher eligibility standards).
- Impacted Campuses
- Impacted Majors and Programs
- Impacted Groups: (Freshman, Transfers)

List of Resources

- www.actstudent.org (ACT)
- www.collegeboard.org (SAT)
- www.assist.org (A – G)
- www.calstateapply.edu (Apply)
- www.universityofcalifornia.edu
(Apply)
- www.fafsa.gov (Free Money)



Ask Yourself...

- Am I on the A – G college prep track?
- Whose responsibility is it to make sure I am?
- What if I have a “D” grade on my transcript in an A – G course?
- Who can I go to for guidance and assistance?

WHERE CAN YOU GO?

- High School Counselor
- AVID/TRiO/CalSOAP
- High School Teachers
- The colleges in your area
- The internet
- Me! (Gema) 707-826-3576
- AND.....

ONE MORE SUPER COOL WEBSITE!!!

www.californiacolleges.edu

- Career Planning
 - Explore Careers and Job Outlooks
- High School Planning
 - Planning timeline, How to succeed in High School
- College Planning
 - Explore Schools, Programs, Majors, and test prep
- Financial Aid Planning
 - Scholarships, Grants, etc...
- Your Portfolio
 - Tools and Resources appropriate to YOU.

Questions?



TRiO Upward Bound
Gema Quiroz-Torres gema@humboldt.edu

NorthCoast Cal-SOAP
(707) 441-2006

<http://www.decadeofdifference.org/go-beyond/college-expo.php>